

EASTSIDE VILLAGE

A SUBDIVISION IN
SECTION 34, TOWNSHIP 3 SOUTH, RANGE 17 EAST
COLUMBIA COUNTY, FLORIDA

FILE NO. _____
RECORDED _____
BOOK _____ PAGE _____
'88 FEB 17 P4:31

PLAT BOOK 5 PAGE 115A
SHEET 2 OF 2

DESCRIPTION:

COMMENCE AT THE SOUTHWEST CORNER OF THE SW 1/4 OF THE SE 1/4, SECTION 34, TOWNSHIP 3 SOUTH, RANGE 17 EAST, COLUMBIA COUNTY, FLORIDA AND RUN N. 6° 20' 43" E. ALONG THE WEST LINE OF SAID SW 1/4 OF THE SE 1/4 A DISTANCE OF 256.68 FEET TO THE POINT OF BEGINNING; THENCE CONTINUE N. 6° 20' 43" E. ALONG SAID WEST LINE 1020.00 FEET; THENCE S. 83° 39' 17" E. 144.00 FEET; THENCE N. 1° 50' 52" E. 58.41 FEET; THENCE N. 11° 02' 50" W. 34.77 FEET; THENCE N. 25° 13' 15" W. 39.57 FEET; THENCE N. 41° 05' 55" W. 120.73 FEET TO A POINT ON THE SOUTHERLY RIGHT OF WAY LINE OF BAYA AVENUE; SAID POINT ALSO BEING ON THE ARC OF A CURVE CONCAVE TO THE LEFT HAVING A RADIUS OF 1474.39 FEET AND A TOTAL CENTRAL ANGLE OF 49° 35' 06"; THENCE NORTHEASTERLY ALONG THE ARC OF SAID CURVE AND SAID SOUTHERLY RIGHT OF WAY LINE 30.16 FEET; THENCE S. 41° 05' 55" E. 117.65 FEET; THENCE S. 25° 13' 15" E. 50.43 FEET; THENCE S. 11° 02' 50" E. 48.23 FEET; THENCE S. 7° 43' 01" W. 167.23 FEET; THENCE S. 83° 42' 24" E. 299.77 FEET; THENCE S. 6° 20' 43" W. 146.95 FEET; THENCE S. 89° 23' 42" E. 357.35 FEET; THENCE S. 6° 20' 43" W. 166.21 FEET; THENCE S. 89° 23' 42" E. 63.23 FEET; THENCE S. 6° 20' 43" W. 297.24 FEET; THENCE S. 89° 23' 42" E. 138.79 FEET; THENCE S. 83° 39' 17" E. 72.00 FEET; THENCE S. 6° 20' 43" W. 302.41 FEET; THENCE S. 21° 11' 33" W. 150.27 FEET; THENCE N. 87° 32' 32" W. 430.99 FEET; THENCE N. 87° 45' 10" W. 101.49 FEET; THENCE S. 88° 45' 28" W. 332.02 FEET; THENCE N. 6° 20' 43" E. 133.51 FEET; THENCE N. 83° 39' 17" W. 144.00 FEET TO THE POINT OF BEGINNING; CONTAINING 20.83 ACRES MORE OR LESS.

COUNTY COMMISSIONERS APPROVAL

APPROVED BY THE BOARD OF COUNTY COMMISSIONERS OF COLUMBIA COUNTY, FLORIDA THIS 16th DAY OF February A.D. 1988

[Signature]
CHAIRMAN

Mary M. Petry
ATTEST: CLERK

CLERK OF CIRCUIT COURT

THIS PLAT HAVING BEEN APPROVED BY THE COLUMBIA COUNTY BOARD OF COUNTY COMMISSIONERS IS ACCEPTED FOR FILES AND RECORDED THIS 17th DAY OF Feb. A.D. 1988 IN PLAT BOOK 5 PAGE 115 & 115A OF THE PUBLIC RECORDS OF COLUMBIA COUNTY, FLORIDA

Mary M. Petry
CLERK OF THE CIRCUIT COURT
COLUMBIA COUNTY, FLORIDA

COUNTY ATTORNEY'S CERTIFICATE:

I HEREBY CERTIFY THAT I HAVE EXAMINED THE FOREGOING PLAT AND THAT IT COMPLIES IN FORM WITH THE COLUMBIA COUNTY SUBDIVISION ORDINANCE AND CHAPTER 177 OF THE FLORIDA STATUTES.

Duane E. Thomas Feb-15, 1988
COUNTY ATTORNEY DATE

DEDICATION FOR MORTGAGEE:

THIS IS TO CERTIFY THAT BARNETT BANK OF COLUMBIA COUNTY, A FLORIDA CORPORATION, BEING A MORTGAGEE OF THE LANDS DESCRIBED IN THE FOREGOING DESCRIPTION, DO HEREBY JOIN IN THE DEDICATION OF SAID LANDS AND PLAT OF "EASTSIDE VILLAGE" FOR THE USES AND PURPOSES THEREIN EXPRESSED AND DEDICATE THE RIGHTS-OF-WAYS AND EASEMENTS AS SHOWN ON THIS PLAT TO THE PERPETUAL USE OF THE PUBLIC.

IN WITNESS WHEREOF "BARNETT BANK OF COLUMBIA COUNTY, A FLORIDA CORPORATION, HAS CAUSED THESE PRESENTS TO BE SIGNED BY ITS SENIOR VICE PRESIDENT, GEORGE C. HINCKLEY, BY AND WITH THE AUTHORITY OF ITS BOARD OF DIRECTORS IN ITS NAME AND WITH ITS CORPORATE SEAL AFFIXED THIS 16th DAY OF January A.D. 1988

WITNESS: Robert D. Burns

George C. Hinckley
GEORGE C. HINCKLEY, SENIOR VICE-PRESIDENT

WITNESS: [Signature]

* CORPORATE SEAL

ACKNOWLEDGEMENT: STATE OF FLORIDA, COUNTY OF COLUMBIA

I HEREBY CERTIFY THAT ON THIS 11 DAY OF February A.D. 1988, BEFORE ME PERSONALLY APPEARED KERMIT R. HORNE, AS OWNER, KNOWN TO ME TO BE THE INDIVIDUAL DESCRIBED IN AND WHO EXECUTED THE FOREGOING DEDICATION AND WHO ACKNOWLEDGES EXECUTION THEREOF.
WITNESS MY SIGNATURE AND OFFICIAL SEAL:

Carol J. Jewett
NOTARY PUBLIC, STATE OF FLORIDA

6/8/89
MY COMMISSION EXPIRES

I HEREBY CERTIFY THAT ON THIS 16th DAY OF January A.D. 1988 BEFORE ME PERSONALLY APPEARED GEORGE C. HINCKLEY, SENIOR VICE PRESIDENT OF "BARNETT BANK OF COLUMBIA COUNTY, A FLORIDA CORPORATION, TO ME KNOWN TO BE THE PERSON WHO EXECUTED THE SAME FREELY AND VOLUNTARILY AS THE ACT AND DEED OF SAID CORPORATION, WITH THE OFFICIAL SEAL OF SAID CORPORATION AFFIXED THERETO.
WITNESS MY SIGNATURE AND OFFICIAL SEAL

Louise J. Hattisenger
NOTARY PUBLIC, STATE OF FLORIDA

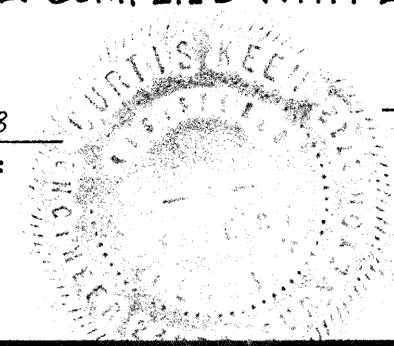
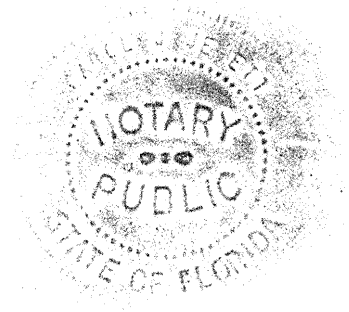
6/8/89
MY COMMISSION EXPIRES:

SURVEYORS CERTIFICATE:

I HEREBY CERTIFY THAT THIS PLAT OF "EASTSIDE VILLAGE" IS A TRUE AND CORRECT REPRESENTATION OF THE LANDS DESCRIBED HEREON ACCORDING TO A SURVEY MADE UNDER MY RESPONSIBLE DIRECTION AND SUPERVISION AND THAT PERMANENT REFERENCE MONUMENTS (R.R.M.) AND PERMANENT CONTROL POINTS (P.C.P.) HAVE BEEN SET AS CALLED FOR UNDER CHAPTER 177, SEC. .091 (7,8) OF THE LAWS OF FLORIDA AND THAT THE SURVEY DATA COMPLIES WITH ALL THE REQUIREMENTS OF CHAPTER 177, FLORIDA STATUTES.

1/28/88
DATE:

Curtis E. Keen
CURTIS E. KEEN, P.L.S.
FLA. REG. CERT NO. 3712



EASTSIDE VILLAGE

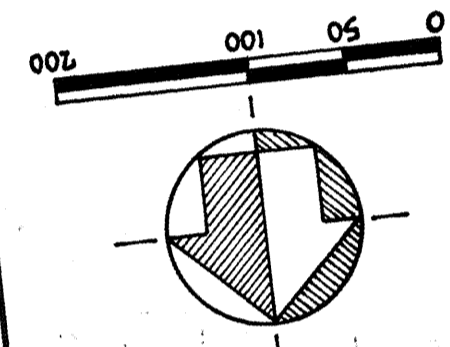
A SUBDIVISION IN SECTION 34, TOWNSHIP 3 SOUTH, RANGE 17 EAST COLUMBIA COUNTY, FLORIDA

"UNPLATTED" LANDS

"UNPLATTED" LANDS

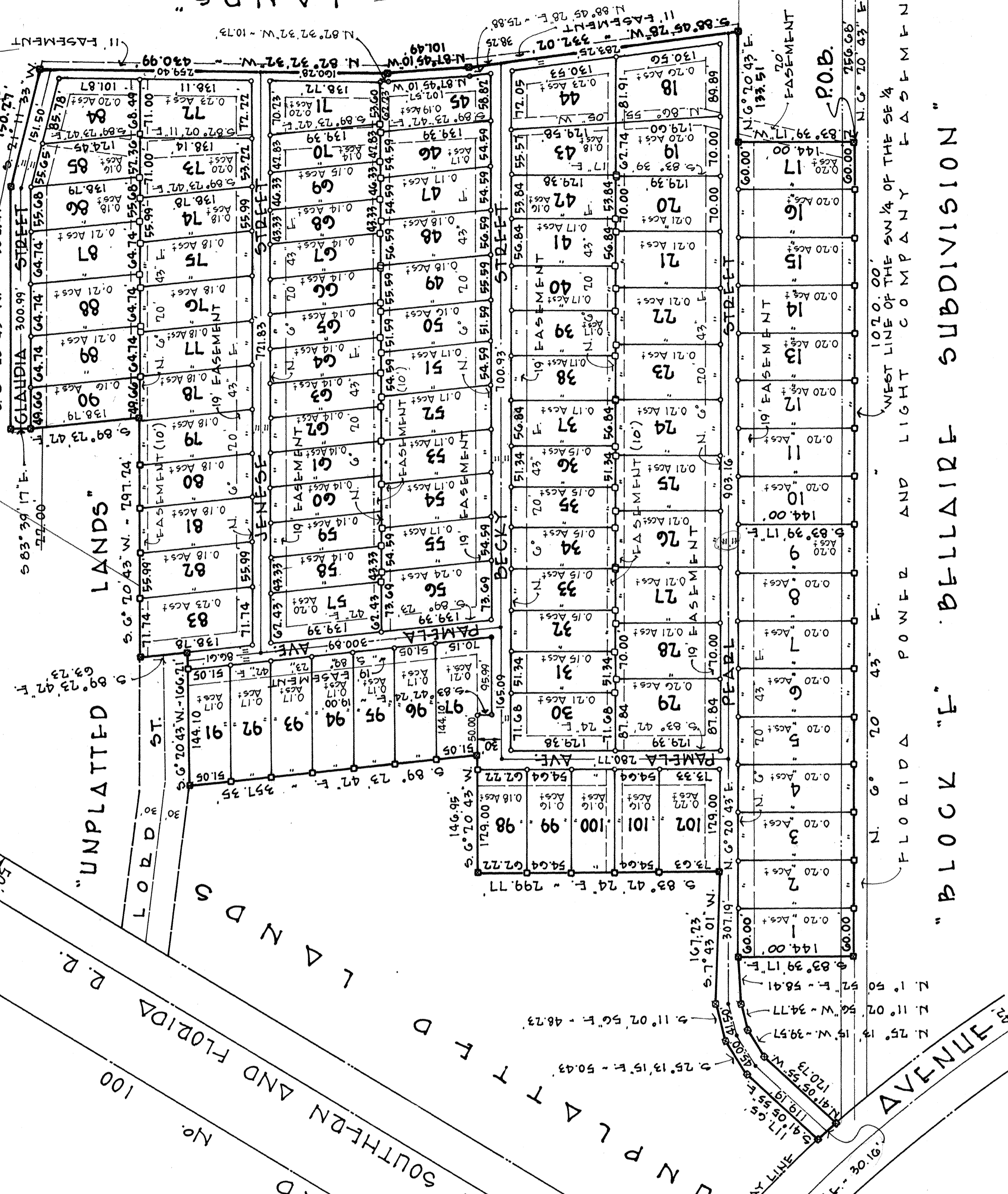
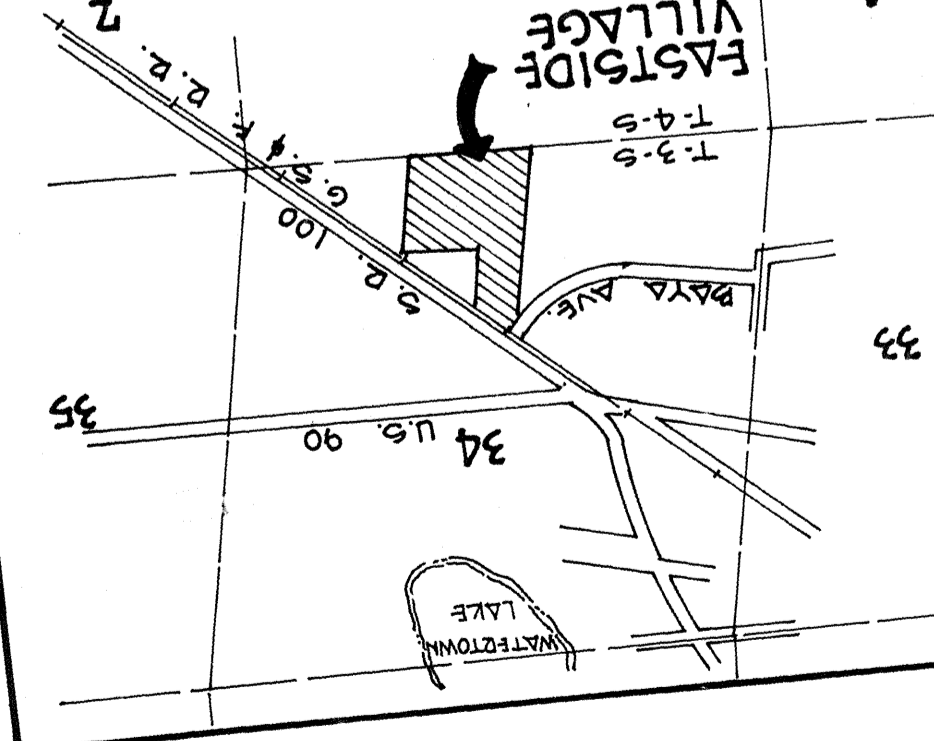
"UNPLATTED" LANDS

"UNPLATTED" LANDS



FILE NO. RECORDED
BOOK
88 FEB 14 1987

LOCATION MAP
SCALE 1" = 2000'



NOTE: EASEMENTS ADJACENT TO STREETS ARE 19.00 FEET IN WIDTH; EASEMENT ALONG BACK LOT LINES ARE 10.00 FEET EACH SIDE OF LOT LINE.

SOUTHWEST CORNER OF THE SW 1/4 OF THE SE 1/4, SEC. 34 (FND. CONC. MON.)

50%

"BLOCK 'F' BELLAIRE SUBDIVISION"

NOTICE:

* THERE MAY BE ADDITIONAL RESTRICTIONS THAT ARE NOT RECORDED ON THIS PLAT THAT MAY BE FOUND IN THE PUBLIC RECORDS OF THIS COUNTY.

* THE EASEMENTS SHOWN HEREON FOR UTILITIES SHALL ALSO BE EASEMENTS FOR THE CONSTRUCTION, INSTALLATION, MAINTENANCE AND OPERATION OF CABLE TELEVISION SERVICES.

LEGEND

1. PERMANENT REFERENCE MONUMENT (P.R.M. #3172) SET
2. PERMANENT CONTROL POINT (P.C.P) SET (BRASS CAP & NAIL)
3. PERMANENT MONUMENT SET
4. CONCRETE PROJECTED FROM RECORDED PLAT OF CATALINA SUBDIVISION
5. HEADINGS PROJECTED FROM RECORDED PLAT OF CATALINA SUBDIVISION
6. CONCRETE PROJECTED FROM RECORDED PLAT OF CATALINA SUBDIVISION
7. HEADINGS PROJECTED FROM RECORDED PLAT OF CATALINA SUBDIVISION
8. CONCRETE PROJECTED FROM RECORDED PLAT OF CATALINA SUBDIVISION
9. HEADINGS PROJECTED FROM RECORDED PLAT OF CATALINA SUBDIVISION
10. CONCRETE PROJECTED FROM RECORDED PLAT OF CATALINA SUBDIVISION
11. HEADINGS PROJECTED FROM RECORDED PLAT OF CATALINA SUBDIVISION
12. CONCRETE PROJECTED FROM RECORDED PLAT OF CATALINA SUBDIVISION
13. HEADINGS PROJECTED FROM RECORDED PLAT OF CATALINA SUBDIVISION
14. CONCRETE PROJECTED FROM RECORDED PLAT OF CATALINA SUBDIVISION
15. HEADINGS PROJECTED FROM RECORDED PLAT OF CATALINA SUBDIVISION
16. CONCRETE PROJECTED FROM RECORDED PLAT OF CATALINA SUBDIVISION
17. HEADINGS PROJECTED FROM RECORDED PLAT OF CATALINA SUBDIVISION
18. CONCRETE PROJECTED FROM RECORDED PLAT OF CATALINA SUBDIVISION
19. HEADINGS PROJECTED FROM RECORDED PLAT OF CATALINA SUBDIVISION
20. CONCRETE PROJECTED FROM RECORDED PLAT OF CATALINA SUBDIVISION
21. HEADINGS PROJECTED FROM RECORDED PLAT OF CATALINA SUBDIVISION
22. CONCRETE PROJECTED FROM RECORDED PLAT OF CATALINA SUBDIVISION
23. HEADINGS PROJECTED FROM RECORDED PLAT OF CATALINA SUBDIVISION
24. CONCRETE PROJECTED FROM RECORDED PLAT OF CATALINA SUBDIVISION
25. HEADINGS PROJECTED FROM RECORDED PLAT OF CATALINA SUBDIVISION
26. CONCRETE PROJECTED FROM RECORDED PLAT OF CATALINA SUBDIVISION
27. HEADINGS PROJECTED FROM RECORDED PLAT OF CATALINA SUBDIVISION
28. CONCRETE PROJECTED FROM RECORDED PLAT OF CATALINA SUBDIVISION
29. HEADINGS PROJECTED FROM RECORDED PLAT OF CATALINA SUBDIVISION
30. CONCRETE PROJECTED FROM RECORDED PLAT OF CATALINA SUBDIVISION
31. HEADINGS PROJECTED FROM RECORDED PLAT OF CATALINA SUBDIVISION
32. CONCRETE PROJECTED FROM RECORDED PLAT OF CATALINA SUBDIVISION
33. HEADINGS PROJECTED FROM RECORDED PLAT OF CATALINA SUBDIVISION
34. CONCRETE PROJECTED FROM RECORDED PLAT OF CATALINA SUBDIVISION
35. HEADINGS PROJECTED FROM RECORDED PLAT OF CATALINA SUBDIVISION
36. CONCRETE PROJECTED FROM RECORDED PLAT OF CATALINA SUBDIVISION
37. HEADINGS PROJECTED FROM RECORDED PLAT OF CATALINA SUBDIVISION
38. CONCRETE PROJECTED FROM RECORDED PLAT OF CATALINA SUBDIVISION
39. HEADINGS PROJECTED FROM RECORDED PLAT OF CATALINA SUBDIVISION
40. CONCRETE PROJECTED FROM RECORDED PLAT OF CATALINA SUBDIVISION
41. HEADINGS PROJECTED FROM RECORDED PLAT OF CATALINA SUBDIVISION
42. CONCRETE PROJECTED FROM RECORDED PLAT OF CATALINA SUBDIVISION
43. HEADINGS PROJECTED FROM RECORDED PLAT OF CATALINA SUBDIVISION
44. CONCRETE PROJECTED FROM RECORDED PLAT OF CATALINA SUBDIVISION
45. HEADINGS PROJECTED FROM RECORDED PLAT OF CATALINA SUBDIVISION
46. CONCRETE PROJECTED FROM RECORDED PLAT OF CATALINA SUBDIVISION
47. HEADINGS PROJECTED FROM RECORDED PLAT OF CATALINA SUBDIVISION
48. CONCRETE PROJECTED FROM RECORDED PLAT OF CATALINA SUBDIVISION
49. HEADINGS PROJECTED FROM RECORDED PLAT OF CATALINA SUBDIVISION
50. CONCRETE PROJECTED FROM RECORDED PLAT OF CATALINA SUBDIVISION
51. HEADINGS PROJECTED FROM RECORDED PLAT OF CATALINA SUBDIVISION
52. CONCRETE PROJECTED FROM RECORDED PLAT OF CATALINA SUBDIVISION
53. HEADINGS PROJECTED FROM RECORDED PLAT OF CATALINA SUBDIVISION
54. CONCRETE PROJECTED FROM RECORDED PLAT OF CATALINA SUBDIVISION
55. HEADINGS PROJECTED FROM RECORDED PLAT OF CATALINA SUBDIVISION
56. CONCRETE PROJECTED FROM RECORDED PLAT OF CATALINA SUBDIVISION
57. HEADINGS PROJECTED FROM RECORDED PLAT OF CATALINA SUBDIVISION
58. CONCRETE PROJECTED FROM RECORDED PLAT OF CATALINA SUBDIVISION
59. HEADINGS PROJECTED FROM RECORDED PLAT OF CATALINA SUBDIVISION
60. CONCRETE PROJECTED FROM RECORDED PLAT OF CATALINA SUBDIVISION
61. HEADINGS PROJECTED FROM RECORDED PLAT OF CATALINA SUBDIVISION
62. CONCRETE PROJECTED FROM RECORDED PLAT OF CATALINA SUBDIVISION
63. HEADINGS PROJECTED FROM RECORDED PLAT OF CATALINA SUBDIVISION
64. CONCRETE PROJECTED FROM RECORDED PLAT OF CATALINA SUBDIVISION
65. HEADINGS PROJECTED FROM RECORDED PLAT OF CATALINA SUBDIVISION
66. CONCRETE PROJECTED FROM RECORDED PLAT OF CATALINA SUBDIVISION
67. HEADINGS PROJECTED FROM RECORDED PLAT OF CATALINA SUBDIVISION
68. CONCRETE PROJECTED FROM RECORDED PLAT OF CATALINA SUBDIVISION
69. HEADINGS PROJECTED FROM RECORDED PLAT OF CATALINA SUBDIVISION
70. CONCRETE PROJECTED FROM RECORDED PLAT OF CATALINA SUBDIVISION
71. HEADINGS PROJECTED FROM RECORDED PLAT OF CATALINA SUBDIVISION
72. CONCRETE PROJECTED FROM RECORDED PLAT OF CATALINA SUBDIVISION
73. HEADINGS PROJECTED FROM RECORDED PLAT OF CATALINA SUBDIVISION
74. CONCRETE PROJECTED FROM RECORDED PLAT OF CATALINA SUBDIVISION
75. HEADINGS PROJECTED FROM RECORDED PLAT OF CATALINA SUBDIVISION
76. CONCRETE PROJECTED FROM RECORDED PLAT OF CATALINA SUBDIVISION
77. HEADINGS PROJECTED FROM RECORDED PLAT OF CATALINA SUBDIVISION
78. CONCRETE PROJECTED FROM RECORDED PLAT OF CATALINA SUBDIVISION
79. HEADINGS PROJECTED FROM RECORDED PLAT OF CATALINA SUBDIVISION
80. CONCRETE PROJECTED FROM RECORDED PLAT OF CATALINA SUBDIVISION
81. HEADINGS PROJECTED FROM RECORDED PLAT OF CATALINA SUBDIVISION
82. CONCRETE PROJECTED FROM RECORDED PLAT OF CATALINA SUBDIVISION
83. HEADINGS PROJECTED FROM RECORDED PLAT OF CATALINA SUBDIVISION
84. CONCRETE PROJECTED FROM RECORDED PLAT OF CATALINA SUBDIVISION
85. HEADINGS PROJECTED FROM RECORDED PLAT OF CATALINA SUBDIVISION
86. CONCRETE PROJECTED FROM RECORDED PLAT OF CATALINA SUBDIVISION
87. HEADINGS PROJECTED FROM RECORDED PLAT OF CATALINA SUBDIVISION
88. CONCRETE PROJECTED FROM RECORDED PLAT OF CATALINA SUBDIVISION
89. HEADINGS PROJECTED FROM RECORDED PLAT OF CATALINA SUBDIVISION
90. CONCRETE PROJECTED FROM RECORDED PLAT OF CATALINA SUBDIVISION
91. HEADINGS PROJECTED FROM RECORDED PLAT OF CATALINA SUBDIVISION
92. CONCRETE PROJECTED FROM RECORDED PLAT OF CATALINA SUBDIVISION
93. HEADINGS PROJECTED FROM RECORDED PLAT OF CATALINA SUBDIVISION
94. CONCRETE PROJECTED FROM RECORDED PLAT OF CATALINA SUBDIVISION
95. HEADINGS PROJECTED FROM RECORDED PLAT OF CATALINA SUBDIVISION
96. CONCRETE PROJECTED FROM RECORDED PLAT OF CATALINA SUBDIVISION
97. HEADINGS PROJECTED FROM RECORDED PLAT OF CATALINA SUBDIVISION
98. CONCRETE PROJECTED FROM RECORDED PLAT OF CATALINA SUBDIVISION
99. HEADINGS PROJECTED FROM RECORDED PLAT OF CATALINA SUBDIVISION
100. CONCRETE PROJECTED FROM RECORDED PLAT OF CATALINA SUBDIVISION
101. HEADINGS PROJECTED FROM RECORDED PLAT OF CATALINA SUBDIVISION
102. CONCRETE PROJECTED FROM RECORDED PLAT OF CATALINA SUBDIVISION
103. HEADINGS PROJECTED FROM RECORDED PLAT OF CATALINA SUBDIVISION
104. CONCRETE PROJECTED FROM RECORDED PLAT OF CATALINA SUBDIVISION
105. HEADINGS PROJECTED FROM RECORDED PLAT OF CATALINA SUBDIVISION
106. CONCRETE PROJECTED FROM RECORDED PLAT OF CATALINA SUBDIVISION
107. HEADINGS PROJECTED FROM RECORDED PLAT OF CATALINA SUBDIVISION

CURVE DATA
 4: 49° 35' 00"
 T: 661.03'
 L: 1239.03'
 D: 1437.39'

10/15/87